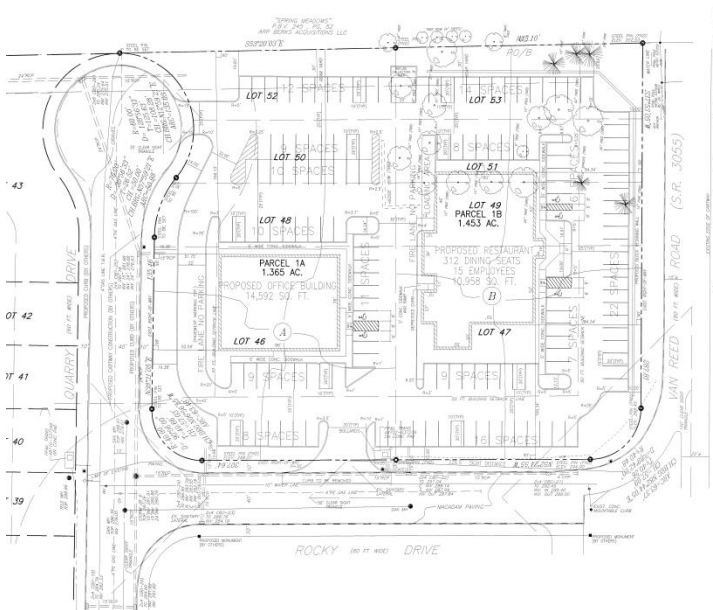




This office/retail project was prepared for Fiorino and Carmina Grande. A 15,000 square foot office facility and 11,000 square foot restaurant were built on the site. The parcel size is approximately 3 acres and is bordered by Spring Meadows to the north, Van Reed Road to the east, Rocky Drive to the south and Quarry Drive to the west. The project scope contained the following services:

- Site Planning
- Vehicular and Pedestrian Circulation Patterns
- Parking Layout
- Storm Drainage and Erosion & Sediment Control
- Grading and Landscaping
- Utility Design and Site Lighting
- Preliminary and Final Land Development Plans
- Access Management
- Construction Documents
- Municipal Approvals

This project created 150 parking spaces and allowed access to Rocky Drive to the south and Quarry Drive to the west. The site contains public water and sewer.



Grande Plaza (Fiorino & Carmina Grande)
Spring Township, Berks County, PA